



# SPECIFICATION FOR APPROVAL

Customer : MSI

Part No : S93-0408120-D04 Rev :     

Description : ADAPTER

Delta Model No : ADP-40MH BDA Rev : 00

Sample Issue Date : April 15,2008

## DELTA ELECTRONICS, INC.

3, Tung Yuan Road

Chungli Industrial Zone.

Taoyuan Hsien 320, Taiwan, R.O.C

Internet : <http://www.deltaww.com>

TEL:886-3-4526107 FAX:886-3-4343617

# TABLE OF CONTENTS

1. Revision History
2. Electrical Specification
3. Schematic
4. PCB Artwork
5. Physical Dimension
6. Label Drawing
7. Packing
8. BOM (Part List)
9. Safety License

**Please send one copy of this specification back after you signed approval for production pre-arrangement.**

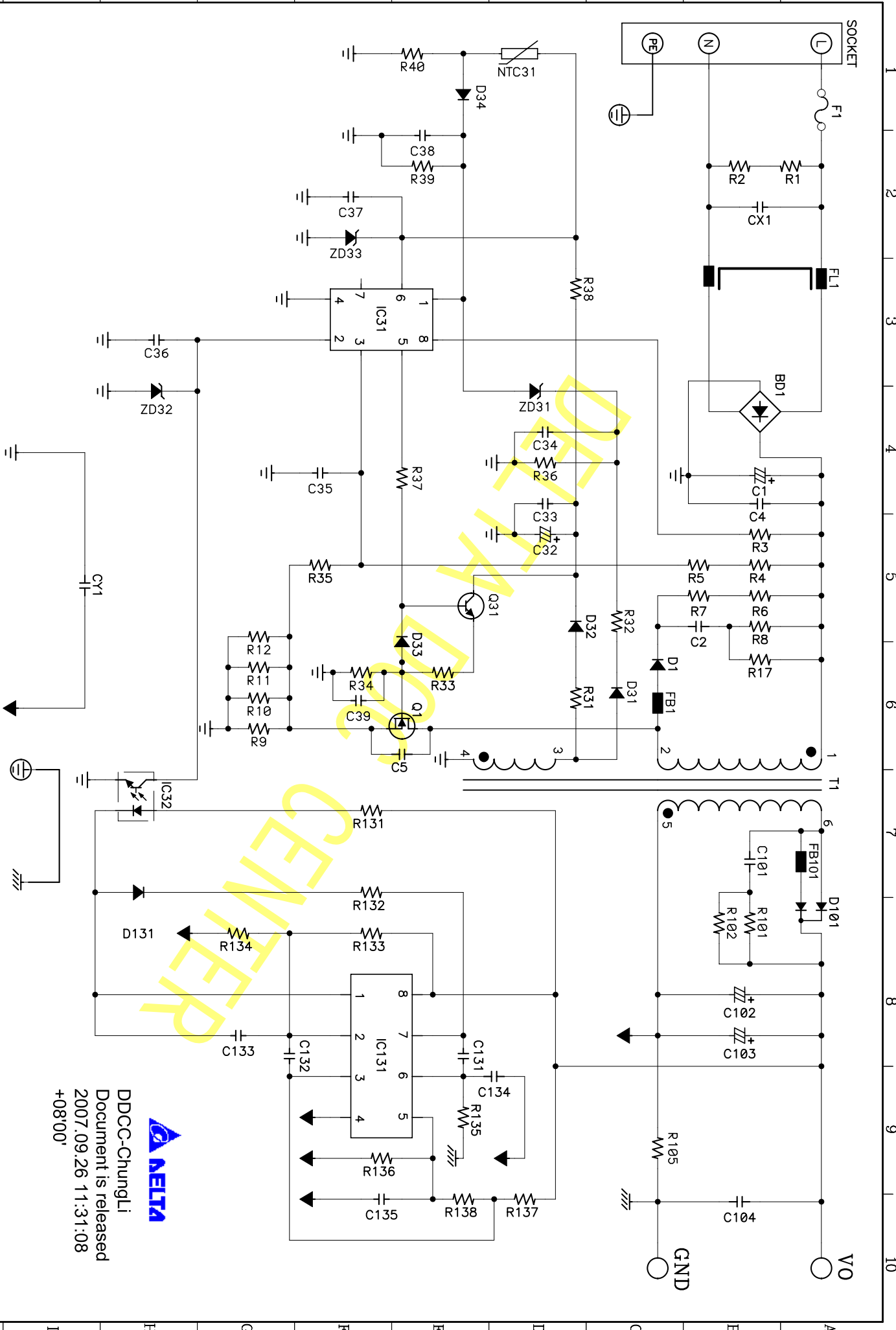
Approved By : \_\_\_\_\_

Date : \_\_\_\_\_

**Engineer By: Jeason Cheng M.Engineer By: Aaron Yang Approved By: Yang Sun**

# 3. Schematic





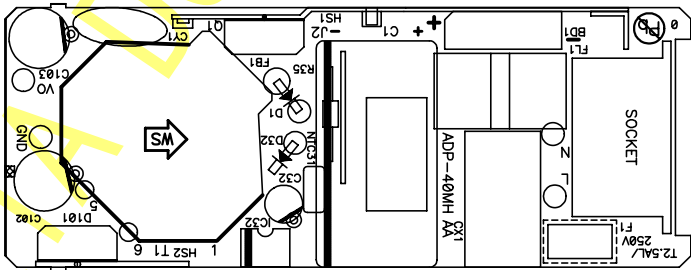
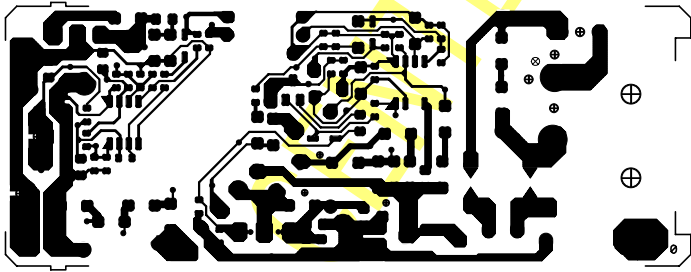
**DELTA ELECTRONICS, INC.**  
 THESE DRAWINGS AND SPECIFICATIONS ARE THE PROPERTY OF DELTA ELECTRONICS INC AND SHALL NOT BE REPRODUCED OR USED AS THE BASIS FOR THE MANUFACTURE OR SELL OF APPARATUS OR DEVICES WITHOUT PERMISSION.  
 Date: 08/21/07  
 PWB: ADP-40MH BA  
 FILE NAME: SC-ADP40MH BARCOO  
 L.Y. REV: 0/0  
 Drawn: **VANNE**  
 09/21/07  
 MODEL NAME: **ADP-40MH BDA**  
 REV: **S00**  
 SHEET: **01** OF **01**

DDC-CHUNG LI  
 Document is released  
 2007.09.26 11:31:08  
 +08'00'

Frame Name: DF-SCA4H-1R00SCH

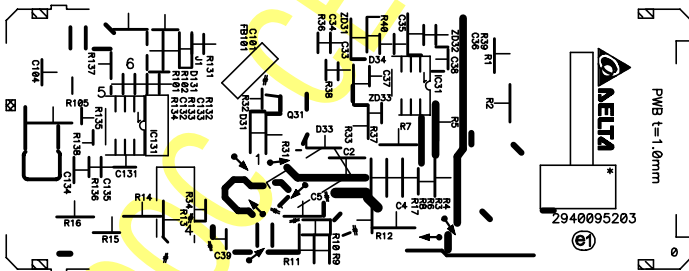
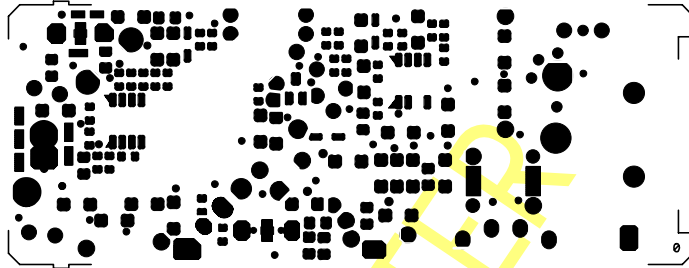
# 4. PCB Artwork





**DELTA** DELTA ELECTRONICS, INC.  
 THESE DRAWINGS AND SPECIFICATIONS ARE THE  
 PROPERTY OF DELTA ELECTRONICS, INC. AND  
 SHALL NOT BE REPRODUCED OR USED AS THE  
 BASIS FOR THE MANUFACTURE OF ANY OTHER  
 DRAWING WITHOUT THE WRITTEN PERMISSION  
 OF DELTA ELECTRONICS, INC.  
 DRAWING NO: P/T-40MH AA REV: 3  
 USED ON: ADP-40MH AA CODE: 0  
 MADE BY: VANNIE DATE: 9/05/07  
 P/N: 2940095203  
 SOLDER SIDE SIZE: 1-1

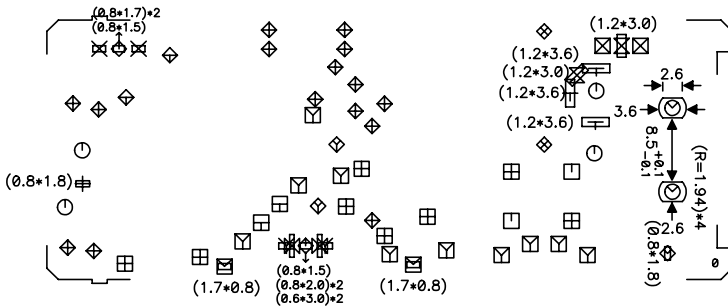
**DELTA** DELTA ELECTRONICS, INC.  
 THESE DRAWINGS AND SPECIFICATIONS ARE THE  
 PROPERTY OF DELTA ELECTRONICS, INC. AND  
 SHALL NOT BE REPRODUCED OR USED AS THE  
 BASIS FOR THE MANUFACTURE OF ANY OTHER  
 DRAWING WITHOUT THE WRITTEN PERMISSION  
 OF DELTA ELECTRONICS, INC.  
 DRAWING NO: P/T-40MH AA REV: 3  
 USED ON: ADP-40MH AA CODE: 0  
 MADE BY: VANNIE DATE: 9/05/07  
 P/N: 2940095203  
 COMPONENT SIDE SIZE: 1-1



**DELTA** DELTA ELECTRONICS, INC.  
 THESE DRAWINGS AND SPECIFICATIONS ARE THE  
 PROPERTY OF DELTA ELECTRONICS, INC. AND  
 SHALL NOT BE REPRODUCED OR USED AS THE  
 BASIS FOR THE MANUFACTURE OR SALE OF  
 APPARATUS OR DEVICES WITHOUT PERMISSION  
 DRAWING NO: P-R: 40MH AA REV: 3  
 USED ON: ADP-40MH AA CODE: 0  
 MADE BY: VANNIE DATE: 9/05/'07  
 P/N: 2940095203  
 SOLDER SIDE SIZE: 1=1

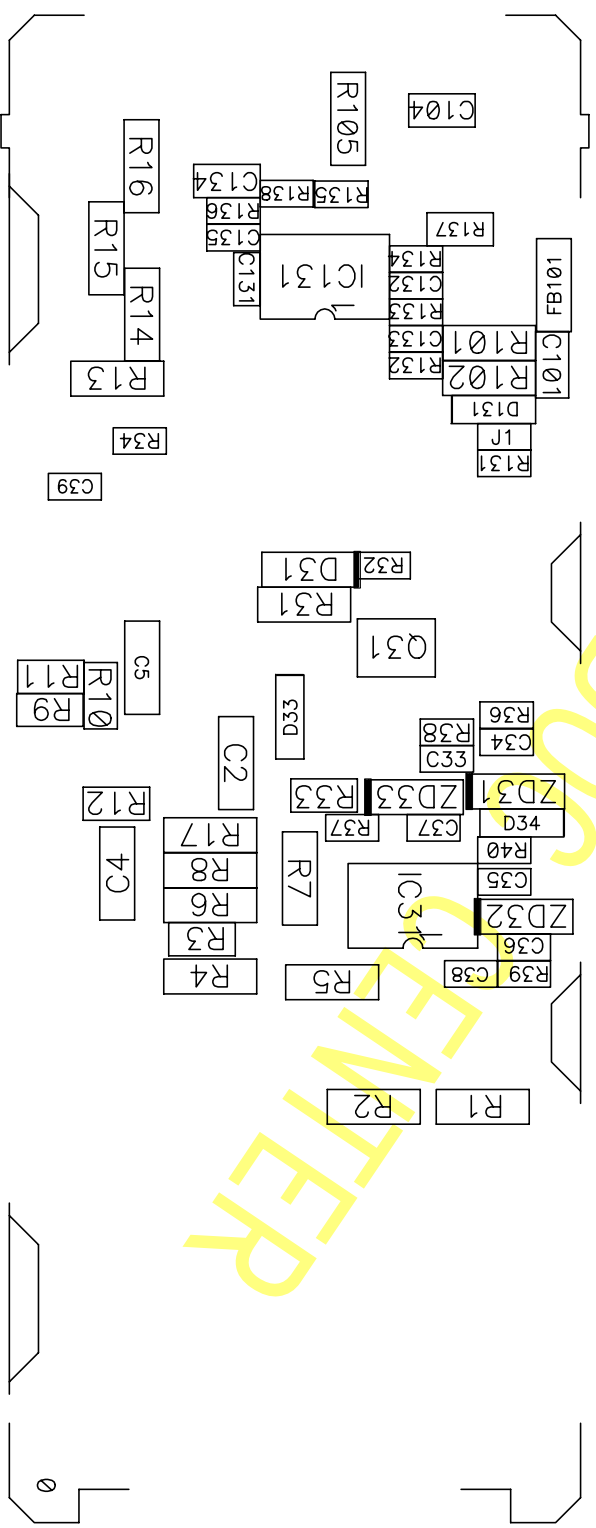
**DELTA** DELTA ELECTRONICS, INC.  
 THESE DRAWINGS AND SPECIFICATIONS ARE THE  
 PROPERTY OF DELTA ELECTRONICS, INC. AND  
 SHALL NOT BE REPRODUCED OR USED AS THE  
 BASIS FOR THE MANUFACTURE OR SALE OF  
 APPARATUS OR DEVICES WITHOUT PERMISSION  
 DRAWING NO: P-W: 40MH AA REV: 3  
 USED ON: ADP-40MH AA CODE: 0  
 MADE BY: VANNIE DATE: 9/05/'07  
 P/N: 2940095203  
 SOLDER SIDE SIZE: 1=1

Drill Table				
HoleDia(mm)	Symbol	Quantity	Plated	Slot
0.060	+	1	No	0.8X1.8
0.061	X	2	No	0.8X1.7
0.062	Y	2	No	0.8X2.0
0.110	T	3	No	1.2X3.6
0.290	X	2	No	1.2X3.0
0.590	X	2	No	0.6X3.0
0.700	□	2	No	
0.720	◇	2	Yes	0.8X1.5
0.770	⊠	2	Yes	1.7X0.8
0.780	◇	1	Yes	0.8X1.8
0.800	◆	15	Yes	
0.800	⊠	2	No	
0.900	⊠	8	No	
1.000	⊠	10	Yes	
1.000	◇	2	No	
1.100	◇	2	Yes	
1.200	⊠	2	Yes	
1.300	◇	2	Yes	
2.000	⊙	4	Yes	
2.590	⊙	2	No	3.6(Round Rectangle)X2.6



**DELTA** DELTA ELECTRONICS, INC.  
 THESE DRAWINGS AND SPECIFICATIONS ARE THE  
 PROPERTY OF DELTA ELECTRONICS, INC. AND  
 SHALL NOT BE REPRODUCED OR USED AS THE  
 BASIS FOR THE MANUFACTURE OR SALE OF  
 APPARATUS OR DEVICES WITHOUT PERMISSION  
 DRAWING NO: P-H: 40MH AA REV: 3  
 USED ON: ADP-40MH AA CODE: 0  
 MADE BY: VANNIE DATE: 9/05/'07  
 P/N: 2940095203  
 SOLDER SIDE SIZE: 1=1

ADP-40MH AA REV:3 CODE:0 2940095203





## 8. BOM (Part list)



**< ADP-40MH BDA CUSTOMER BOM LIST >**

DATE: 04/14/2008  
REV: 00

DESCRIPTION	MFG NAME	MFG PART	%	QPA	UNIT	DESIGN NO	Item text 1
RES CF 1/4W 2.2Kohm J SMALL	KAMAYA		0	1.000	PCE	R35	
	ROYAL						
	TY-OHM						
	YAGEO						
RES CF 1/4W 2.2Kohm J SMALL	TZAI YUAN ENTERPRISE CO., LTD.	CF 1/4WS 2K2 J T52	100	1.000	PCE	R35	
FUSE T S 2.5A 250V L	BEL FUSE LIMITED	RST 2.5	0	1.000	PCE	F1	
FUSE T S 2.5A 250VAC L	WICKMANN ASIA LTD.	392-2.5A	0	1.000	PCE	F1	
FUSE T S 2.5A 250V L	CONQUER ELEC.CO.,LTD	MST2.5	100	1.000	PCE	F1	
RES NTC 470Kohm J 5200K +/-7%	UPPERMOST ELECTRONIC INDUSTRIES CO	TDC05D447J(TDC05D447)-5m	0	1.000	PCE	NTC31	
RES NTC 470Kohm J 5200K +/-7%	THINKING ELECTRONIC INDUSTRIAL CO.,	TTC05474JSY751(TTC474)	100	1.000	PCE	NTC31	
CAP Y1/X1 CD 250VAC 1000pF M Z5U V110	TDK Corporation	CD70-ZU2GA102MYGK	100	1.000	PCE	CY1	
CAP Y1/X1 CD 250VAC 1000pF M E V110	WALSIN TECHNOLOGY CORPORATION	AH08E102MD0L-S	0	1.000	PCE	CY1	
CAP Y1/X1 CD 250VAC 1000pF M E TP V110	MURATA MANUFACTURING CO.LTD	DE1E3KX102MN4AL01/A5	0	1.000	PCE	CY1	
CAP AL LD 25V 330uF M 8*15 P3.5	NICHICON CORPORATION	UHD1E331MPD1CV	0	1.000	PCE	C102	
CAP AL LD 25V 330uF M 8*15 P3.5	NICHICON CORPORATION	UHD1E331MPD1CV	0	1.000	PCE	C103	
CAP AL LD 25V 330uF M 8*15 P3.5	TAICON CORPORATION	THD1E331MK08150CK3	100	1.000	PCE	C102	
CAP AL LD 25V 330uF M 8*15 P3.5	TAICON CORPORATION	THD1E331MK08150CK3	100	1.000	PCE	C103	
CAP AL LD 25V 330uF M 8*16 P3.5	RUBYCON CORPORATION	25ZL330MEFCCE8*16	0	1.000	PCE	C102	
CAP AL LD 25V 330uF M 8*16 P3.5	RUBYCON CORPORATION	25ZL330MEFCCE8*16	0	1.000	PCE	C103	
CAP AL LD 35V 33uF M 5*11 TP P5	NICHICON CORPORATION	UPW1V330MDD1TA	0	1.000	PCE	C32	
CAP AL LD 35V 33uF M 5*11 TP P5	TAICON CORPORATION	TPW1V330MK05110TC1	0	1.000	PCE	C32	
CAP AL LD 35V 33uF M 5*11 TP P5	LUMINOUS TOWN ELECTRIC CO., LTD.	ZGD1VM330D11A	100	1.000	PCE	C32	
CAP AL LD 35V 33uF M 5*11 TP P5	RUBYCON CORPORATION	35YXG33MEFCTA5*11	0	1.000	PCE	C32	
CAP AL LD 35V 33uF M 5*11 TP P5	NIPPON CHEMI-CON CORPORATION	EKY-350ETC330ME11D	0	1.000	PCE	C32	
CAP AL 400V 100uF M 16*30 P7.5	NIPPON CHEMI-CON CORPORATION	KMG400VB100M16*30E1	0	1.000	PCE	C1	
CAP AL 400V 100uF M 16*31.5 P7.5	NICHICON CORPORATION	UPT2G101MHDADT	100	1.000	PCE	C1	
CAP AL 400V 100uF M 16*30 P7.5	LUMINOUS TOWN ELECTRIC CO., LTD.	TYD2GM101K300	0	1.000	PCE	C1	
CAP X2 MP PC 275VAC 0.33uF K P15	HUA JUNG COMPONENTS CO., LTD.	MKP-334K0275AB1151	100	1.000	PCE	CX1	
CAP X2 MP PC 275VAC 0.33uF M P15	ARCOTRONICS ITALIA SPA	R46KI333045M	0	1.000	PCE	CX1	
CAP X2 MP PC 275VAC 0.33uF K P15	OKAYA HONG KONG TRADING LTD.	LE334	0	1.000	PCE	CX1	
DIO BRD 2A 800V D3K-4P	SHINDENGEN ELECTRIC MANUFACTURING	UD2KB80-7000	100	1.000	PCE	BD1	
DIO BRD 2A 800V KBPM-4P	VISHAY SEMICONDUCTOR	2KBP08M-E4/51	0	1.000	PCE	BD1	
DIO BRD 2A 800V KBP-4P	GULF SEMICONDUCTOR LIMITED	KBP08G-47L	0	1.000	PCE	BD1	
DIO BRD 2A 800V 2K-4P	Tianjin Zhong-Huan Semiconductor	T2KB80	0	1.000	PCE	BD1	
DIO FRD 1A 1000V DO-41-2P 500nS	FAGOR ELECTRONICA, S. COOP	RGP10MAMP	0	1.000	PCE	D1	
DIO FRD 1A 1000V DO-41-2P 500nS	VISHAY SEMICONDUCTOR	RGP10M-E3/73	0	1.000	PCE	D1	
DIO FRD 1A 1000V DO-41-2P 500nS	PAN JIT INTERNATIONAL INC.	PG1010R T/B	100	1.000	PCE	D1	
DIO FRD 1A 1KV DO-41-2P 500nS	GULF SEMICONDUCTOR LIMITED	RGP10M-47L	0	1.000	PCE	D1	
DIO FRD 1A 1KV DO-41-2P 500nS	Tianjin Zhong-Huan Semiconductor	TRGP10M-B5	0	1.000	PCE	D1	
DIO SBD 10A 100V TO-220AB-3P C.C.	STMicroelectronics Asia Pacific Pte	STPS10H100CT	100	1.000	PCE	D101	
DIO SBD 10A 100V TO-220AB-3P C.C.	VISHAY SEMICONDUCTOR	MBR10H100CT-E3/45	0	1.000	PCE	D101	
DIO SBD 10A 100V TO-220AB-3P C.C.	ON	MBR10H100CTG	0	1.000	PCE	D101	
DIO SBD 10A 100V TO-220AB-3P C.C.	DIODES	SBR10100CT	0	1.000	PCE	D101	
DIO SBD 10A 100V TO-220AB-3P C.C.	PAN JIT	MBR10100CT	0	1.000	PCE	D101	
DIO SI 1A 1KV DO-41-2P	ON Semiconductor Corporation	1N4007RLG	0	1.000	PCE	D32	
DIO SI 1A 1KV DO-204AL-2P	VISHAY SEMICONDUCTOR	1N4007-E3/73	0	1.000	PCE	D32	
DIO SI 1A 1KV DO-41-2P	PAN JIT INTERNATIONAL INC.	1N4007 T/B	100	1.000	PCE	D32	
DIO SI 1A 1KV DO-41-2P	Tianjin Zhong-Huan Semiconductor	T1N4007	0	1.000	PCE	D32	
DIO SI 1A 1KV DO-41-2P	GULF SEMICONDUCTOR LIMITED	1N4007-47L	0	1.000	PCE	D32	
DIO SI 1A 1KV DO-41-2P	FAIRCHILD SEMICONDUCTOR HK LTD.	1N4007	0	1.000	PCE	D32	
PHOTO TR 50mA 80V DIP-4P 150-300%	COSMO ELECTRONICS CORPORATION	K10103G	0	1.000	PCE	IC32	
PHOTO TR 60mA 70V DIP-4P 160-320%	VISHAY SEMICONDUCTOR	TCET1114G	0	1.000	PCE	IC32	
PHOTO TR 40mA 80V 4P 150-300% 10.16mm	NEC CORPORATION	PS2561BL1-1-V(G)	100	1.000	PCE	IC32	
PHOTO TR 50mA 70V DIP-4P 160-300%	SHARP ELECTRONIC COMPONENTS(TAIWAN)	PC123Y92FZ0F	0	1.000	PCE	IC32	
FET 600V 6A 1.2ohm TO-220FP-3P	STMicroelectronics Asia Pacific Pte	STP6NK60ZFP	100	1.000	PCE	Q1	
FET 600V 6A 1.25ohm TO-220F-3P	TOSHIBA CORP.	2SK3562(Q)	0	1.000	PCE	Q1	
FET 600V 6A 1.1ohm TO-220FI(LS)-3P	SANYO ELECTRONIC CO.,LTD.	2SK2628LS	0	1.000	PCE	Q1	
FET 600V 7A 1.2ohm TO-220F-3P	AUK CORPORATION	STK0760F	0	1.000	PCE	Q1	
TRANSFORMER MAIN RM10 800uH +/-5%	DELTA ELECTRONICS,INC.	MV-NB7291		1.000	PCE	T1	
LINE FILTER T14 10.3mH MIN	DELTA ELECTRONICS,INC.	HFV-NB7103		1.000	PCE	FL1	
CORE BEAD 3.5*1.2*6*3.5*3.5 40ohm W5	TAI-TECH ADVANCED ELECTRONICS CO,LT	BRH3.5*6*1.2		1.000	PCE	FB1	
RES SMD 1/4W 100ohm J 1206	KAMAYA		100	1.000	PCE	R101	
	ROYAL						
	TA-I						
	YAGEO						
RES SMD 1/4W 100ohm J 1206	WALSIN TECHNOLOGY CORPORATION	WR12X101 JTL	0	1.000	PCE	R101	
RES SMD 1/4W 100ohm J 1206	KAMAYA		100	1.000	PCE	R102	
	ROYAL						
	TA-I						
	YAGEO						
RES SMD 1/4W 100ohm J 1206	WALSIN TECHNOLOGY CORPORATION	WR12X101 JTL	0	1.000	PCE	R102	
RES SMD 1/4W 100ohm J 1206	KAMAYA		100	1.000	PCE	R17	
	ROYAL						

**< ADP-40MH BDA CUSTOMER BOM LIST >**

DATE: 04/14/2008

REV: 00

DESCRIPTION	MFG NAME	MFG PART	%	QPA	UNIT	DESIGN NO	Item text 1
	TA-I						
	YAGEO						
RES SMD 1/4W 100ohm J 1206	WALSIN TECHNOLOGY CORPORATION	WR12X101 JTL	0	1.000	PCE	R17	
RES SMD 1/4W 100ohm J 1206	KAMAYA		100	1.000	PCE	R8	
	ROYAL						
	TA-I						
	YAGEO						
RES SMD 1/4W 100ohm J 1206	WALSIN TECHNOLOGY CORPORATION	WR12X101 JTL	0	1.000	PCE	R8	
RES SMD 1/4W 1.8Mohm J 1206	KAMAYA		100	1.000	PCE	R1	
	ROYAL						
	TA-I						
	YAGEO						
RES SMD 1/4W 1.8Mohm J 1206	WALSIN TECHNOLOGY CORPORATION	WR12X185 JTL	0	1.000	PCE	R1	
RES SMD 1/4W 1.8Mohm J 1206	KAMAYA		100	1.000	PCE	R2	
	ROYAL						
	TA-I						
	YAGEO						
RES SMD 1/4W 1.8Mohm J 1206	WALSIN TECHNOLOGY CORPORATION	WR12X185 JTL	0	1.000	PCE	R2	
RES SMD 1/4W 2.2Mohm J 1206	KAMAYA		0	1.000	PCE	R4	
	ROYAL						
	TA-I						
	YAGEO						
RES SMD 1/4W 2.2Mohm J 1206	WALSIN TECHNOLOGY CORPORATION	WR12X225 JTL	100	1.000	PCE	R4	
RES SMD 1/4W 2.2Mohm J 1206	KAMAYA		0	1.000	PCE	R5	
	ROYAL						
	TA-I						
	YAGEO						
RES SMD 1/4W 2.2Mohm J 1206	WALSIN TECHNOLOGY CORPORATION	WR12X225 JTL	100	1.000	PCE	R5	
RES SMD 1/4W 3.3ohm J 1206	KAMAYA		0	1.000	PCE	R31	
	ROYAL						
	TA-I						
	YAGEO						
RES SMD 1/4W 3.3ohm J 1206	WALSIN TECHNOLOGY CORPORATION	WR12X3R3 JTL	100	1.000	PCE	R31	
RES SMD 1/4W 47Kohm J 1206	KAMAYA		0	1.000	PCE	R6	
	ROYAL						
	TA-I						
	YAGEO						
RES SMD 1/4W 47Kohm J 1206	WALSIN TECHNOLOGY CORPORATION	WR12X473 JTL	100	1.000	PCE	R6	
RES SMD 1/4W 47Kohm J 1206	KAMAYA		0	1.000	PCE	R7	
	ROYAL						
	TA-I						
	YAGEO						
RES SMD 1/4W 47Kohm J 1206	WALSIN TECHNOLOGY CORPORATION	WR12X473 JTL	100	1.000	PCE	R7	
RES SMD 1/2W 10mohm F 1206	CYNTEC CO.,LTD.	RL1632L R010 FN	100	1.000	PCE	R105	
RES SMD 1/10W 1K~2kohm F 0603	KAMAYA		100	1.000	PCE	R136	
	ROYAL						
	TA-I						
	YAGEO						
RES SMD 1/10W 1K~2kohm F 0603 (TYPICAL RES SMD 1/10W 1.5Kohm F 0603)	WALSIN TECHNOLOGY CORPORATION	WR06X1501FTL	0	1.000	PCE	R136	
RES SMD 1/10W 10Kohm F 0603	KAMAYA		0	1.000	PCE	R134	
	ROYAL						
	TA-I						
	YAGEO						
RES SMD 1/10W 10Kohm F 0603	WALSIN TECHNOLOGY CORPORATION	WR06X1002FTL	100	1.000	PCE	R134	
RES SMD 1/10W 71.5Kohm F 0603	KAMAYA		0	1.000	PCE	R133	
	ROYAL						
	TA-I						
	YAGEO						
RES SMD 1/10W 71.5Kohm F 0603	WALSIN TECHNOLOGY CORPORATION	WR06X7152FTL	100	1.000	PCE	R133	
RES CH 1/10W 3.92K F 0603	KAMAYA		0	1.000	PCE	R40	
	ROYAL						
	TA-I						
	YAGEO						
RES SMD 1/10W 3.92Kohm F 0603	WALSIN TECHNOLOGY CORPORATION	WR06X3921FTL	100	1.000	PCE	R40	
RES SMD 1/10W 30.1ohm F 0603	KAMAYA		0	1.000	PCE	R132	
	ROYAL						
	TA-I						
	YAGEO						
RES SMD 1/10W 30.1ohm F 0603	WALSIN TECHNOLOGY CORPORATION	WR06X30R1FTL	100	1.000	PCE	R132	
RES SMD 1/10W 113Kohm F 0603	KAMAYA		0	1.000	PCE	R138	
	ROYAL						
	TA-I						
	YAGEO						
RES SMD 1/10W 113Kohm F 0603	WALSIN TECHNOLOGY CORPORATION	WR06X1133FTL	100	1.000	PCE	R138	
RES SMD 1/10W 0ohm J 0603	KAMAYA		0	1.000	PCE	J1	
	ROYAL						

**< ADP-40MH BDA CUSTOMER BOM LIST >**

DATE: 04/14/2008

REV: 00

DESCRIPTION	MFG NAME	MFG PART	%	QPA	UNIT	DESIGN NO	Item text 1
	TA-I						
	YAGEO						
RES SMD 1/10W 0ohm J 0603	WALSIN TECHNOLOGY CORPORATION	WR06X000 PTL	100	1.000	PCE	J1	
	KAMAYA		0	1.000	PCE	R37	
	ROYAL						
	TA-I						
	YAGEO						
RES SMD 1/10W 10ohm J 0603	WALSIN TECHNOLOGY CORPORATION	WR06X100 JTL	100	1.000	PCE	R37	
	KAMAYA		0	1.000	PCE	R33	
	ROYAL						
	TA-I						
	YAGEO						
RES SMD 1/8W 100ohm J 0805	WALSIN TECHNOLOGY CORPORATION	WR08X101 JTL	100	1.000	PCE	R33	
	KAMAYA		100	1.000	PCE	R34	
	ROYAL						
	TA-I						
	YAGEO						
RES SMD 1/10W 100Kohm J 0603	WALSIN TECHNOLOGY CORPORATION	WR06X104 JTL	0	1.000	PCE	R34	
	KAMAYA		0	1.000	PCE	R137	
	ROYAL						
	TA-I						
	YAGEO						
RES SMD 1/8W 15Kohm J 0805	WALSIN TECHNOLOGY CORPORATION	WR08X153 JTL	100	1.000	PCE	R137	
	KAMAYA		100	1.000	PCE	R10	
	ROYAL						
	TA-I						
	YAGEO						
RES SMD 1/8W 1.8ohm J 0805	WALSIN TECHNOLOGY CORPORATION	WR08X1R8 JTL	0	1.000	PCE	R10	
	KAMAYA		100	1.000	PCE	R11	
	ROYAL						
	TA-I						
	YAGEO						
RES SMD 1/8W 1.8ohm J 0805	WALSIN TECHNOLOGY CORPORATION	WR08X1R8 JTL	0	1.000	PCE	R11	
	KAMAYA		100	1.000	PCE	R9	
	ROYAL						
	TA-I						
	YAGEO						
RES SMD 1/8W 1.8ohm J 0805	WALSIN TECHNOLOGY CORPORATION	WR08X1R8 JTL	0	1.000	PCE	R9	
	KAMAYA		0	1.000	PCE	R3	
	ROYAL						
	TA-I						
	YAGEO						
RES SMD 1/8W 2.2Kohm J 0805	WALSIN TECHNOLOGY CORPORATION	WR08X222 JTL	100	1.000	PCE	R3	
	KAMAYA		0	1.000	PCE	R36	
	ROYAL						
	TA-I						
	YAGEO						
RES SMD 1/10W 24Kohm J 0603	WALSIN TECHNOLOGY CORPORATION	WR06X243 JTL	100	1.000	PCE	R36	
	KAMAYA		0	1.000	PCE	R32	
	ROYAL						
	TA-I						
	YAGEO						
RES SMD 1/10W 300ohm J 0603	WALSIN TECHNOLOGY CORPORATION	WR06X301 JTL	100	1.000	PCE	R32	
	KAMAYA		0	1.000	PCE	R131	
	ROYAL						
	TA-I						
	YAGEO						
RES SMD 1/10W 330ohm J 0603	WALSIN TECHNOLOGY CORPORATION	WR06X331 JTL	100	1.000	PCE	R131	
	KAMAYA		100	1.000	PCE	R12	
	ROYAL						
	TA-I						
	YAGEO						
RES SMD 1/8W 3.3ohm J 0805	WALSIN TECHNOLOGY CORPORATION	WR08X3R3 JTL	0	1.000	PCE	R12	
	KAMAYA		0	1.000	PCE	R38	
	ROYAL						
	TA-I						
	YAGEO						
RES SMD 1/10W 510ohm J 0603	WALSIN TECHNOLOGY CORPORATION	WR06X511 JTL	100	1.000	PCE	R38	
	KAMAYA		0	1.000	PCE	R135	
	ROYAL						
	TA-I						
	YAGEO						
RES SMD 1/10W 5.1Kohm J 0603	WALSIN TECHNOLOGY CORPORATION	WR06X512 JTL	100	1.000	PCE	R135	
	KAMAYA		0	1.000	PCE	R39	
	ROYAL						
	TA-I						
	YAGEO						

**< ADP-40MH BDA CUSTOMER BOM LIST >**

DATE: 04/14/2008

REV: 00

DESCRIPTION	MFG NAME	MFG PART	%	QPA	UNIT	DESIGN NO	Item text 1
RES SMD 1/10W 56Kohm J 0603	WALSIN TECHNOLOGY CORPORATION	WR06X563 JTL	100	1.000	PCE	R39	
CAP MC SMD 50V 100pF J C0G 0603	AVX		0	1.000	PCE	C35	
	KEMET						
	MURATA						
	PHYCOMP						
	TDK						
CAP MC SMD 50V 100pF J C0G 0603	WALSIN TECHNOLOGY CORPORATION	0603N101J500LT	100	1.000	PCE	C35	
CAP MC SMD 50V 560pF J C0G 0603	AVX		0	1.000	PCE	C131	
	KEMET						
	MURATA						
	PHYCOMP						
	TDK						
CAP MC SMD 50V 560pF J C0G 0603	WALSIN TECHNOLOGY CORPORATION	0603N561J500LT	100	1.000	PCE	C131	
CAP MC SMD 50V 680pF J C0G 0603	AVX		0	1.000	PCE	C132	
	KEMET						
	MURATA						
	PHYCOMP						
	TDK						
CAP MC SMD 50V 680pF J C0G 0603	WALSIN TECHNOLOGY CORPORATION	0603N681J500LT	100	1.000	PCE	C132	
CAP MC SMD 50V 1000pF K X7R 0603	AVX		0	1.000	PCE	C36	
	KEMET						
	MURATA						
	PHYCOMP						
	TDK						
CAP MC SMD 50V 1000pF K X7R 0603	WALSIN TECHNOLOGY CORPORATION	0603B102K500CT	100	1.000	PCE	C36	
CAP MC SMD 50V 1000pF K X7R 0603	AVX		0	1.000	PCE	C39	
	KEMET						
	MURATA						
	PHYCOMP						
	TDK						
CAP MC SMD 50V 1000pF K X7R 0603	WALSIN TECHNOLOGY CORPORATION	0603B102K500CT	100	1.000	PCE	C39	
CAP MC SMD 50V 0.1uF K X7R 0603	AVX			1.000	PCE	C133	
	KEMET						
	MURATA						
	PHYCOMP						
	TDK						
CAP MC SMD 50V 0.1uF K X7R 0603	AVX		0	1.000	PCE	C33	
	KEMET						
	MURATA						
	PHYCOMP						
	TDK						
CAP MC SMD 50V 0.1uF K X7R 0603	WALSIN TECHNOLOGY CORPORATION	0603B104K500CT	100	1.000	PCE	C33	
CAP MC SMD 50V 0.1uF K X7R 0603	AVX		0	1.000	PCE	C34	
	KEMET						
	MURATA						
	PHYCOMP						
	TDK						
CAP MC SMD 50V 0.1uF K X7R 0603	WALSIN TECHNOLOGY CORPORATION	0603B104K500CT	100	1.000	PCE	C34	
CAP MC SMD 50V 0.1uF K X7R 0603	AVX		0	1.000	PCE	C37	
	KEMET						
	MURATA						
	PHYCOMP						
	TDK						
CAP MC SMD 50V 0.1uF K X7R 0603	WALSIN TECHNOLOGY CORPORATION	0603B104K500CT	100	1.000	PCE	C37	
CAP MC SMD 50V 0.1uF K X7R 0603	AVX		0	1.000	PCE	C38	
	KEMET						
	MURATA						
	PHYCOMP						
	TDK						
CAP MC SMD 50V 0.1uF K X7R 0603	WALSIN TECHNOLOGY CORPORATION	0603B104K500CT	100	1.000	PCE	C38	
CAP MC SMD 50V 0.1uF K X7R 0805	AVX		0	1.000	PCE	C104	
	KEMET						
	MURATA						
	PHYCOMP						
	TDK						
CAP MC SMD 50V 0.1uF K X7R 0805	WALSIN TECHNOLOGY CORPORATION	0805B104K500CT	100	1.000	PCE	C104	
CAP MC SMD 200V 680pF K X7R 0805	AVX			1.000	PCE	C101	
	KEMET						
	MURATA						
	PHYCOMP						
	TDK						
CAP MC SMD 16V 0.1uF K X7R 0603	AVX		100	1.000	PCE	C135	
	KEMET						
	MURATA						
	PHYCOMP						
	TDK						
CAP MC SMD 16V 1uF K X7R 0805	AVX		100	1.000	PCE	C134	
	KEMET						

**< ADP-40MH BDA CUSTOMER BOM LIST >**

DATE: 04/14/2008

REV: 00

DESCRIPTION	MFG NAME	MFG PART	%	QPA	UNIT	DESIGN NO	Item text 1
	MURATA						
	PHYCOMP						
	TDK						
CAP MC SMD 500V 1000pF K X7R 1206	AVX		100	1.000	PCE	C2	
	KEMET						
	MURATA						
	PHYCOMP						
	TDK						
CAP MC SMD 500V 1000pF K X7R 1206	WALSIN TECHNOLOGY CORPORATION	1206B102K501CT	0	1.000	PCE	C2	
CAP MC SMD 1KV 33pF~100pF J C0G 1206	KEMET ELECTRONICS CORPORATION	C1206C560JDGAC	100	1.000	PCE	C5	
CAP MC SMD 1KV 33pF~100pF J C0G 1206	HOLY STONE ENTERPRISE CO LTD	CG1206N560J102T	0	1.000	PCE	C5	
(TYPICAL CAP MC SMD 1KV 56pF J C0G 1206)							
DIO ZEN 500mW 11.44-12.03V MINIMELF-2P	VISHAY SEMICONDUCTOR	TLZ12B-GS08	0	1.000	PCE	ZD31	
DIO ZEN 500mW 11.44-12.03V LLDS-2P SMD	ROHM CO.,LTD.	RLZ TE-11 12B	100	1.000	PCE	ZD31	
DIO ZEN 500mW 11.74-12.35V MINIMELF-2P	VISHAY SEMICONDUCTOR	TLZ12C-GS08	100	1.000	PCE	ZD31	
DIO ZEN 500mW 11.74-12.35V MINIMELF-2P	ROHM CO.,LTD.	RLZ TE-11 12C	0	1.000	PCE	ZD31	
(TYPICAL DIO ZEN 500mW 11.44-12.03V LLDS-2P SMD)							
DIO ZEN 500mW 11.74-12.35V MINIMELF-2P	VISHAY SEMICONDUCTOR	TLZ12C-GS08	100	1.000	PCE	ZD32	
DIO ZEN 500mW 11.74-12.35V MINIMELF-2P	ROHM CO.,LTD.	RLZ TE-11 12C	0	1.000	PCE	ZD32	
DIO ZEN 500mW 14.35-15.09V MINIMELF-2P	VISHAY SEMICONDUCTOR	TLZ15C-GS08	0	1.000	PCE	ZD33	
DIO ZEN 500mW 14.35-15.09V MINIMELF-2P	ROHM CO.,LTD.	RLZ TE-11 15C	100	1.000	PCE	ZD33	
DIO SW 200mA 250V MINIMELF-2P SMD	ROHM CO.,LTD.	RLS245 TE-11	0	1.000	PCE	D31	
DIO SW 250mA 250V SOD80C-2P SMD	NXP Semiconductors	BAV103,135	0	1.000	PCE	D31	
DIO SW 250mA 250V MINIMELF-2P SMD	VISHAY SEMICONDUCTOR	BAV103-GS08	100	1.000	PCE	D31	
DIO SW 250mA 85V SOD-323-2P SMD	NXP Semiconductors	BAS316	100	1.000	PCE	D131	
DIO SW 250mA 85V SOD-323-2P SMD	NXP Semiconductors	BAS316	100	1.000	PCE	D33	
DIO SW 250mA 85V SOD-323-2P SMD	NXP Semiconductors	BAS316	100	1.000	PCE	D34	
DIO SW 225mA 90V SOD-323-2P SMD	ROHM CO.,LTD.	1SS355 TE-17	0	1.000	PCE	D131	
DIO SW 225mA 90V SOD-323-2P SMD	ROHM CO.,LTD.	1SS355 TE-17	0	1.000	PCE	D33	
DIO SW 225mA 90V SOD-323-2P SMD	ROHM CO.,LTD.	1SS355 TE-17	0	1.000	PCE	D34	
DIO SW 200mA 100V SOD-323-2P SMD	ON Semiconductor Corporation	MMDL914T1G	0	1.000	PCE	D131	
DIO SW 200mA 100V SOD-323-2P SMD	ON Semiconductor Corporation	MMDL914T1G	0	1.000	PCE	D33	
DIO SW 200mA 100V SOD-323-2P SMD	ON Semiconductor Corporation	MMDL914T1G	0	1.000	PCE	D34	
TR 40V 600mA SOT-23-3P 100-300 SMD	ON Semiconductor Corporation	MMBT4401LT1G	100	1.000	PCE	Q31	
TR 40V 600mA SOT-23-3P 100-300 SMD	NXP Semiconductors	PMBT4401,215	0	1.000	PCE	Q31	
TR 40V 600mA SOT-23-3P 100-300 SMD	KEC ELECTRONICS CO.,LTD	KN4401S RTK/P	0	1.000	PCE	Q31	
EOL IC ASIC DUAL OP+VOL REF SOIC-8P SMD	TEXAS INSTRUMENTS	DAS01A	0	1.000	PCE	IC131	
IC ASIC DUAL OP+VOL REF SOIC-8P SMD	STMicroelectronics Asia Pacific Pte	DAS01A	100	1.000	PCE	IC131	
IC ASIC PWM SO-8P SMD	ON Semiconductor Corporation	DAP008ADR2G		1.000	PCE	IC31	
BEAD CH 31ohm 6A 1206	CHILISIN ELECTRONICS CORP.	UPB321611T-310Y-NA	0	1.000	PCE	FB101	
BEAD CH 31ohm 6A 1206	TAI-TECH ADVANCED ELECTRONICS CO,LT	HCB3216KF-310T60	100	1.000	PCE	FB101	
PWB S 0 E2 CEM-1 90.8*35.4*1	AE			1.000	PCE	PWB	
	BRITE PLUS						
	DRACO						
	GLORY FAITH						
	HSIANG KUO						
	KEENRICH						
	SHENG KHUANG						
	SHYE FENG						
	TECHNI						
	WANNIENFU						
SOCKET C6 SK-1024M 1.2 #20	DELTA			1.000	PCE		
DC POWER CORD PLUG L1800 BLK	ASLINK (2007/10/09)			1.000	PCE		
	CAROL						
	FOXCONN						
	JI-HAW						
	WENTAI						
SCREW M M3*0.5*7 FF C S18C ZN	LIANYING			1.000	PCE		FOR HS1
	SCREWTECH						
NUT HEXH M3*0.5*2.4 S17C ZN	LIANYING			1.000	PCE		FOR HS1
	SCREWTECH						
LABEL PACKING ART PAPER 75*105 T0.125	CYMMETRIK			0.025	PCE		FOR PSE REQUIREMENT
	YONG TA						
TAPE POLYESTER 14mm 1L #44 YEL	Minnesota Mining Manufacture Co.,	#44 W=14	100	20.000	MMT		FOR C1
TAPE PET 14mm 1L WF-2902 YEL	YAHUA STICKING TAPE CO LTD	WF-2902 W=14	0	20.000	MMT		FOR C1
TAPE POLYESTER 10mm 1L #1350F-1 YEL	Minnesota Mining Manufacture Co.,	#1350F-1 W=10	100	60.000	MMT		FOR SHIELD
TAPE POLYESTER 10mm 1L CT-280 LIGHT YEL	YAHUA STICKING TAPE CO LTD	CT-280 W=10	0	60.000	MMT		FOR SHIELD
TAPE POLYESTER 32mm 3L #1350F-1 YEL	Minnesota Mining Manufacture Co.,	#1350F-1 W=32 3L		0.022	MTR		FOR HS2
TAPE PET 12mm 3L #1350F-1 YEL	Minnesota Mining Manufacture Co.,	#1350F-1 W=12 3L		30.000	MMT		FOR HSK2

**< ADP-40MH BDA CUSTOMER BOM LIST >**

DATE: 04/14/2008  
REV: 00

DESCRIPTION	MFG NAME	MFG PART	%	QPA	UNIT	DESIGN NO	Item text 1
TAPE PET 12mm 3L #1350F-1 YEL	Minnesota Mining Manufacture Co.,	#1350F-1 W=12 3L		14.000	MMT		FOR HSK2
TAPE POLYESTER 15mm 3L #1350F-1 YEL	Minnesota Mining Manufacture Co.,	#1350F-1 W=15 3L		17.000	MMT		FOR HSK1
TAPE POLYESTER 20mm #1350T-3 YEL	Minnesota Mining Manufacture Co.,	#1350T-3 W=20		0.012	MTR		FOR INSULATOR
TUBE HS POLYOLEFIN 8*0.25 BLK	LONGWELL	LHS-125FR		11.000	MMT		FOR F1
	SANLIAN	S-901					
	SUMITOMO	SUMITUBE F32					
	TYCO(RAYCHEM)	VERSAFIT/VERSAFIT V2					
TUBE TEFLON 0.71 #22 TW CLEAR				14.000	MMT		FOR NTC2
TUBE TEFLON 0.71 #22 TW CLEAR				14.000	MMT		FOR NTC2
TUBE TEFLON 20*0.3 #20 TW CLEAR				16.000	MMT		FOR C1
	MARKEL	TFE-200C-150V					
	MARKEL	TFE-200C-300V					
	MARKEL	TFE-200C-600V					
	ZEUS	TFE-SW-600					
	ZEUS	TFE-TW-300					
	ZEUS	TFE-LW-150					
INSULATOR PP 26*10*6*0.45 BLK	ITW FORMEX	FORMEX GK-17		1.000	PCE		
	ITW FORMEX	FORMEX-18					
	SABIC	FR25A					
	SABIC	FR700					
INSULATOR CR RUBBER 10*3 T2.5				1.000	PCE		
INSULATOR CR RUBBER 8*3 T2.5				3.000	PCE		
PAD RUBBER 94V0 16*3*2.4 BLK				1.000	PCE		
INSULATOR PC 94V0 17*17*0.43 BLK	ITW FORMEX	FORMEX-18		1.000	PCE		
	ITW FORMEX	FORMEX GK-17					
	SABIC	FR700					
	SABIC	FR25A					
LABEL PACKING PAPER 30*20 T0.075 ADP-90S				0.025	PCE		FOR RoHS
LABEL PACKING PAPER 100*70 T0.1 ADP-90SB				0.025	PCE		FOR CARTON
LABEL BARCODE POLYESTER 55*9 T0.05				1.000	PCE		BARCODE
LABEL BARCODE ART PAPER 145*165 T0.05				0.025	PCE		FOR ECS
LABEL SPEC POLYESTER 72*28 T0.1 ADP-40MH				1.000	PCE		CARTON LABEL
	CYMMETRIK						FOR SPEC
	YONG TA						
CASE CHASSIS PC 94V0 96*42 BLK			100	1.000	PCE		FOR 6485
CASE COVER PC 94V0 96*42*20.2 BLK			100	1.000	PCE		FOR 6485
CASE CHASSIS PC 94V0 96*42 BLK			0	1.000	PCE		FOR 945
CASE COVER PC 94V0 96*42*20.2 BLK			0	1.000	PCE		FOR 945
	BAYER	MAKROLON 6485					
	SABIC	LEXAN 945					
HSK STAMP SPT 26.5*16.5 T0.5 TIN PLATED				1.000	PCE		HSK2
HSK STAMP SPT 60.5*16.5 T0.5 TIN PLATED				1.000	PCE		HSK1
	HENG YU						
	HOO THAI						
	WANCHENG (2008/01/10)						
	WEIDI						
	WEISHENG						
JUMP WIRE TEFLON 1330 #22 17.5*4 CLEAR				1.000	PCE	J2	
SHIELD AL 69*37.2*22.2*0.2				1.000	PCE		
SHIELD ASSY ADP-40MH BA	CHON YANG			1.000	PCE		
	HOO THAI						

REPORTED BY	MATERIAL GROUP	DESIGN ENG	APPROVED BY
Jolan.Hung			